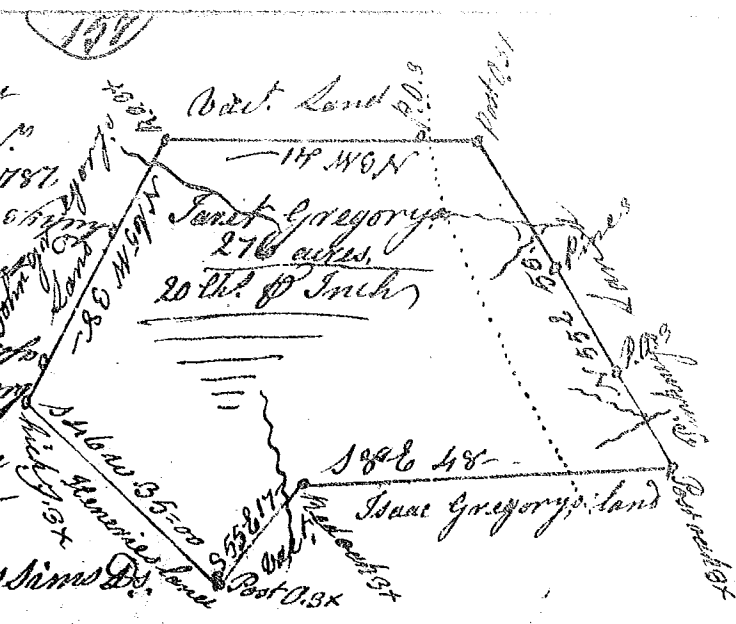


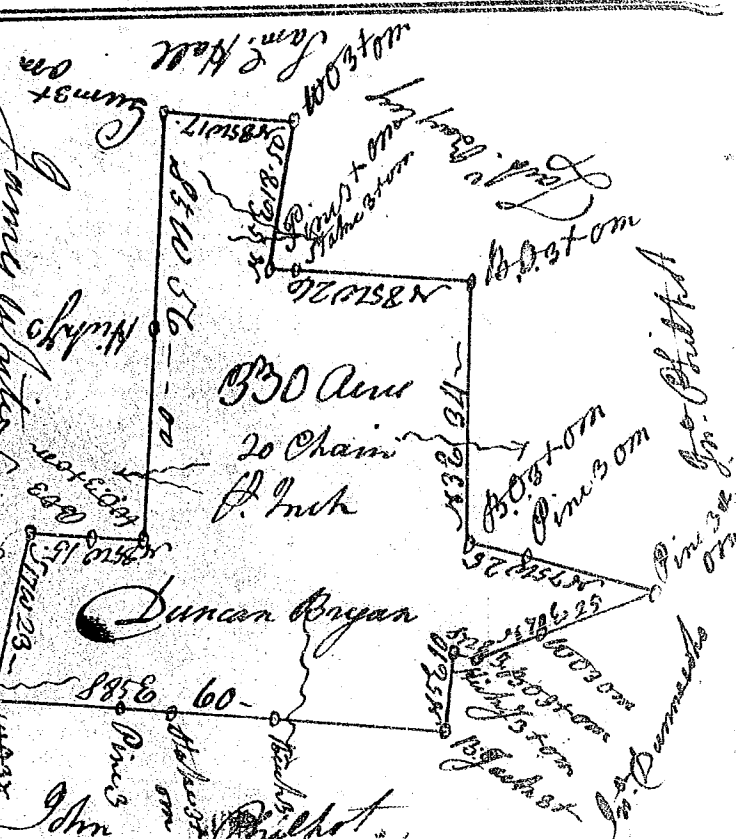
State of S^c Carolina

Pursuant to a warrant from John Thomas Esq. Com^r of locations, Dated 24th Jan^y. 1787. I have admeasured and laid out unto Jacob Gregory a tract of 276 acres of land in q^uad^rant^l on the south side of broad river on the branches of Gregory and Neal's Creeks, and hath such shape and Marks as the above Plat represents,
 Surveyed 25th Jan^y. 1787
 Recorded 2^d Feb^r. 1787 by Charles Sims D^r.



State of S^c Carolina

Pursuant to a Warrant from John Tho^s Esq^r Com^r dates the 24th Jan^y. 1787. I have laid out unto Duncan Bryan an tract of Three Hundred and thirty Acres of Land Situate in Laurens County on the Branches of Cane Creek & branch of dam of Little River & hath such form marks & Buttines of Boundings as the above Plat represents



Surveyed the 29th Jan^y 1787 by Wm Davis Thomas D^r.
 Recorded the 2^d Feb^r 1787 Del^d the owner